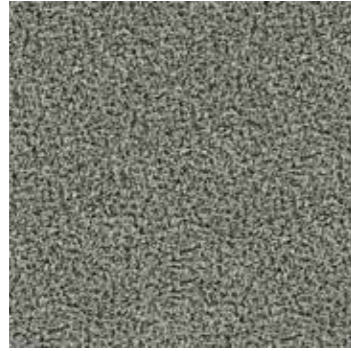
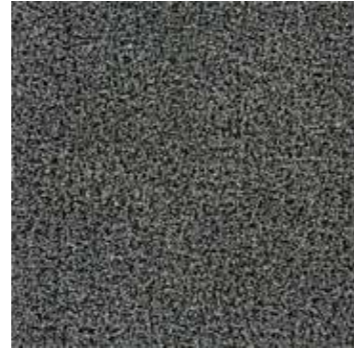


Touch & Tones 103



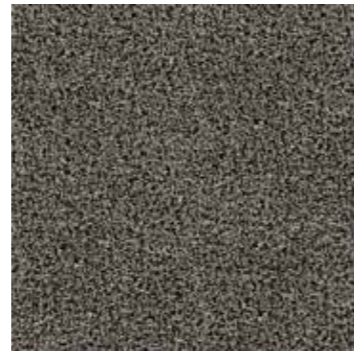
4176001 Silver



4176002 Neutral Grey



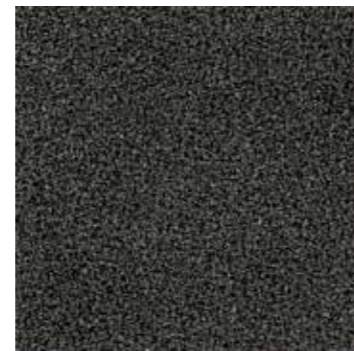
4176003 Linen



4176004 Greige



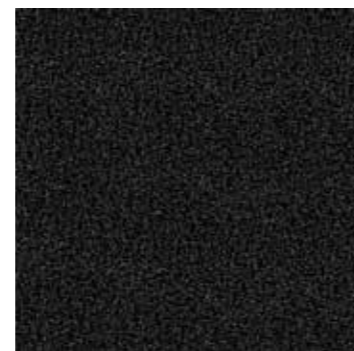
4176005 Elephant



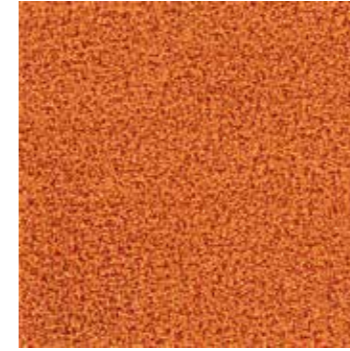
4176006 Taupe



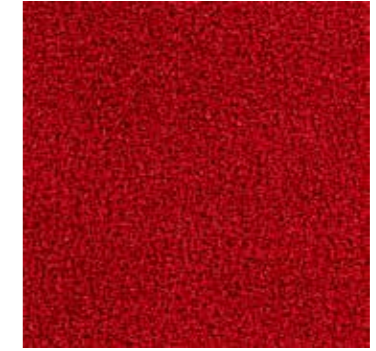
4176007 Tobacco



4176008 Black



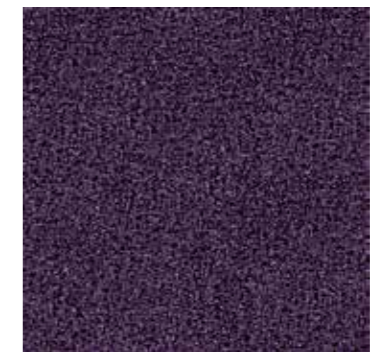
4176009 Orange



4176010 Red



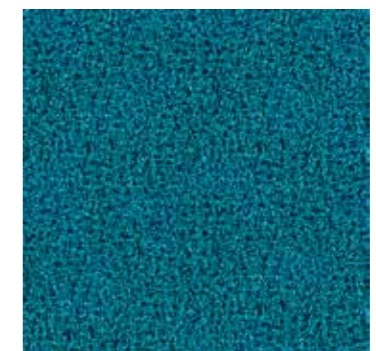
4176011 Bougainvillea



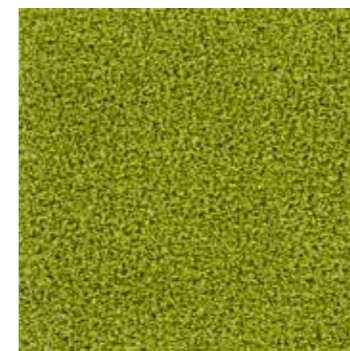
4176012 Grape



4176013 Ultra Marine



4176014 Turquoise



4176015 Lemonade



4176016 Moss



4176003 Linen
Installed: Monolithic



4176009 Orange
Installed: Monolithic




4176014 Turquoise (shown with Touch & Tones 101 Ultra Marine & 102 Moss)

Installed: Monolithic







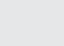
Product Definition	Tufted Plain Shag Cut Tile
Konstruktion	Getuftete "Shaggy"-Veloursqualität
Descripción	Moqueta modular tufting pelo cortado
Description	Dalle de moquette à velours tufté coupé à longues fibres torsadées
Type	Getufte shaggy
Descrizione	Velluto tufted shag
Pile Material	100% Nylon
Polfasermaterial	100% Polyamid
Composición Fibra	100% Poliamida
Composition	100% Polyamide
Poolmateriaal	100% Polyamide
Fibra	100% Poliammide
Pile Yarn Weight / Poleinsatzgewicht / Peso Fibra / Poids de fibre / Poolinzetgewicht / Peso Felpa	1314 g/m ² ± 10%
Total Weight / Gesamtgewicht / Peso Total / Poids total / Totaalgewicht / Peso Totale	4764 g/m ² ± 7,5%
Pile Height / Polschichtdicke / Altura Fibra / Hauteur de la fibre / Poolhoogte / Altezza Felpa	7,2 mm ± 0,3 mm
Total Thickness / Gesamtdicke / Espesor Total / Epaisseur totale / Totale dikte / Altezza Totale	10,6 mm ± 0,3 mm
Gauge/Ends 10 cm / Teilung x 10 cm / Galga x10 cm / Jauge-Rangs par 10 cm / Rijen per 10 cm / Serraggio x 10 cm	5/16 – 12,6
Tufts per m² / Noppenzahl/m ² / Puntadas m ² / Densité du tuft par m ² / Aantal noppen per m ² / Densità Punti	42.840 ± 5%
Backing Type / Rückenkonstruktion / Soporte / Sous-couche / Ruguitvoering / Sottofondo	Graphlex®
Wear Classification / Beanspruchungsklasse / Clasificación al tráfico / Classement d'usage et de confort / Gebruiksintensiteit / Resistenza all'usura	Heavy Contract (EN 1307) Class 33 / LC5

Radiant Panel / Schwerentflammbarkeit / Clasificación Al Fuego / Classement feu / De Radiant Panel Test / Valutazione delle proprietà ignifughe	(EN ISO 9239-1) Euroclass Cfl s1 (EN 13501-1)					
Dimensional Stability / Dimensionsstabilität / Estabilidad Dimensional / Stabilité dimensionnelle / Dimensione stabile / Test Stabilità dimensionale	≤ 0,2% (EN 986)					
Impact Sound Insulation (ΔL_w) / Trittschallverbesserungsmaß / Impacto Aislamiento Acústico / Réduction du bruit d'impact / Contactgeluid absorptie / Isolamento all'impatto acustico	25 dB (EN ISO 10140-3)					
Rating of Sound Absorption / Gewichteter Schallabsorptionskoeffizient / Clasificación de Absorción de Sonido / Coefficient d'absorption acoustique / Waarde geluidsabsorptie / Valutazione dell'assorbimento acustico	α _w 0,20 (EN ISO 11654)					
Sound Absorption / Schallabsorptionsgrad / Absorción de Sonido / Absorption acoustique / Geluidsabsorptie / Assorbimento acustico						
125Hz	250Hz	500Hz	1000Hz	2000Hz	4000Hz	(EN ISO 354)
0,02	0,07	0,12	0,27	0,41	0,56	α _s

Style 4176 3m² - 12 tiles per box (50 x 50 cm ± 0,2%)



DOP: 1037/121927
textile floor covering
EN 1307

Interface European Manufacturing BV reserve the right to change or modify specifications.

Interface European Manufacturing BV behält sich das Recht vor, Produktspezifikationen zu ändern oder entsprechend anzupassen.

Interface European Manufacturing BV se reserva el derecho a modificar las especificaciones arriba referenciadas.

Interface European Manufacturing BV se réserve la possibilité de modifier les caractéristiques ci-dessus.

Interface European Manufacturing BV behoudt zich het recht voor de specificaties te allen tijde aan te passen.

Interface European Manufacturing BV si riserva il diritto di modificare le proprie specifiche tecniche senza preavviso.

For full environment data, visit:
www.interface.com/eds
Visit our design blog at:
www.designwithpurposeblog.com

Light Values

Product	Colour No	Colour Name	L Value*	Y Value*
Touch & Tones 103	4176001	Silver	48.5	17.2
	4176002	Neutral Grey	40.3	11.4
	4176003	Linen	55.5	23.5
	4176004	Greige	51.9	20.1
	4176005	Elephant	39.3	10.9
	4176006	Taupe	30.4	6.4
	4176007	Tobacco	28.1	5.5
	4176008	Black	18.0	2.5
	4176009	Orange	58.5	26.5
	4176010	Red	28.6	5.7
	4176011	Bougainvillea	25.3	4.5
	4176012	Grape	24.3	4.2
	4176013	Ultra Marine	23.3	3.9
	4176014	Turquoise	38.8	10.5
	4176015	Lemonade	55.4	23.3
	4176016	Moss	37.4	9.7

* **Light Value:** L Value = L according to CIE L*a*b* colour space, Y Value = Light Reflectance Value according to BS 8493

Lichtreflexionswerte: L-Wert = L gemäß CIE L*a*b* Farbspektrum, Y-Wert = Lichtreflexionswert gemäß British Standard BS 8493

Valores de Reflectancia de Luz: Valor L = L según CIE L*a*b* espacio de color, Valor Y = Valor de reflectancia de luz según el estándar británico BS 8493

Valeurs concernant la lumière: Valeur L = L faisant référence à la méthode CIE L*a*b* pour la couleur, Valeur Y = Valeurs de réflectance de la lumière selon le British Standard BS 8493

Licht waarden: L Waarde = L volgens CIE L*a*b*kleurruimte, Y Waarde = Licht Reflectie Waarde volgens BS 8493

Indici di riflettanza alla luce: Indice L = L secondo CIE L*a*b* colour space, Indice Y = Indice di riflettanza alla luce secondo la norma BS 8493

Environmental Data Sheet

Construction			
Yarn system	100% Nylon		
Backing system	Graphlex®		
Recycled Content	Total	Pre Consumer	Post Consumer
Yarn average	0,00%	0,00%	0,00%
Product average	37,92%	37,92%	0,00%
Recycled content can be subject to differences between colours. See details for individual colours on next page.			
Carbon Footprint			
Global Warming Potential (kgs CO2 equivalents/sq meter)			
Full life-cycle carbon footprint (following our EPD results or EPD calculation method)	Raw materials and Production:	18.8 kg CO ₂ eq./m ²	
	Delivery and installation:	1.057 kg CO ₂ eq./m ²	
	Use (10 years):	2.95 kg CO ₂ eq./m ²	
	End of life (waste to energy):	9.552 kg CO ₂ eq./m ²	
	TOTAL (10 years' lifetime):	32.359 kg CO ₂ eq./m ²	
CO ₂ compensation	Carbon neutral Cool Carpet® is optional		
Manufacturing			
Location	Scherpenzeel, NL Factory is certified ISO 14001 since 1996 and ISO 9001 since 1990		
Installation Impacts			
TacTiles™	Optimised for glue-free installation with TacTiles™ connectors with virtually zero VOCs		
Installation Waste	In a typical installation* using the installation method below:		
	Monolithic - 3-4% installation waste		
	For reference: 2 metre wide broadloom typically generates 7-10 % installation waste		
* In a rectangular building, installed before walls.			
End-of-life			
Alternatives to landfill	Reuse: Can be cleaned and reused in a non-critical location to extend its useful life		
	Recycling: Can be returned through the Interface ReEntry scheme and be re-used as raw material in new carpet tiles		
	Waste-to-Energy: Can be incinerated in appropriate waste to energy plant		
Indoor Air Quality			
GUT (Gemeinschaft umweltfreundlicher Teppichboden)	The product passes all requirements of GUT's testing criteria regarding hazardous substances, emissions and odour. GUT PRODIS certificate n°BFC53AA4		
CRI (Carpet & Rug Institute)	Compliant to LEED IQ 4.3 credit (tested in Eurofins to the equivalent test of the CRI Green Label Plus)		
Compliance to Green Building Schemes			
See next page to check how our products contribute to the main green building certification schemes (BREEAM, LEED, HQE and DGNB)			
Type III Environmental Product Declaration			
EPD according to ISO 14025	This product is covered by the Environmental Product Declaration EPD-IFF-20130007-CBC1-EN		

Recycled content – colour level						
Colourway	Total Recycled Content	Pre consumer recycled content	Post consumer recycled content	Total yarn recycled content	Yarn pre-consumer	Yarn post-consumer
4176001 SILVER	37,92%	37,92%	0,00%	0,00%	0,00%	0,00%
4176002 NEUTRAL GREY	37,92%	37,92%	0,00%	0,00%	0,00%	0,00%
4176003 LINEN	37,92%	37,92%	0,00%	0,00%	0,00%	0,00%
4176004 GREIGE	37,92%	37,92%	0,00%	0,00%	0,00%	0,00%
4176005 ELEPHANT	37,92%	37,92%	0,00%	0,00%	0,00%	0,00%
4176006 TAUPE	37,92%	37,92%	0,00%	0,00%	0,00%	0,00%
4176007 TOBACCO	37,92%	37,92%	0,00%	0,00%	0,00%	0,00%
4176008 BLACK	37,92%	37,92%	0,00%	0,00%	0,00%	0,00%
4176009 ORANGE	37,92%	37,92%	0,00%	0,00%	0,00%	0,00%
4176010 RED	37,92%	37,92%	0,00%	0,00%	0,00%	0,00%
4176011 BOUGAINVILLEA	37,92%	37,92%	0,00%	0,00%	0,00%	0,00%
4176012 GRAPE	37,92%	37,92%	0,00%	0,00%	0,00%	0,00%
4176013 ULTRA MARINE	37,92%	37,92%	0,00%	0,00%	0,00%	0,00%
4176014 TURQUOISE	37,92%	37,92%	0,00%	0,00%	0,00%	0,00%
4176015 LEMONADE	37,92%	37,92%	0,00%	0,00%	0,00%	0,00%
4176016 MOSS	37,92%	37,92%	0,00%	0,00%	0,00%	0,00%

Compliance to Green Building Schemes

BREEAM (UK + inter) BRE Green Guide Ratings:
 Office - Not Available
 Education - Not Available
 Health Care - Not Available
 Retail (by fashion) - Not Available
 Potential contribution to following categories and credits:
 Hea 02 - Indoor air quality – minimising sources of air pollution
 Hea 05 - Acoustic Performance
 Mat 01 - Life Cycle Impacts
 Mat 05 - Designing for robustness
 Wst 01 - Construction Waste Management

LEED 2009 US Potential direct or indirect contribution to following categories and credits:
 Indoor Environmental Quality
 Credit 4.1 Low Emitting Materials: Adhesive & Sealants
 Credit 4.3 Low Emitting Materials: Carpet Systems
 Materials and Resources
 Credit 2.1 Construction Waste Management
 Credit 4.1 Recycled content
 Credit 5.1 Regional Materials
 Innovation and Design
 Credits 1-4 1 Pilot Credit 43, Certified Products

HQE (FR) **Potential direct or indirect contribution to several points within following targets:**
 Contribution potentielle directe ou indirecte aux cibles suivantes :
 2. **Integrated choice of products and construction materials** / Choix intégré des procédés et produits de construction
 3. **Low site nuisance** / Chantiers à faibles nuisances
 9. **Acoustic comfort** / Confort acoustique
 10. **Visual comfort** / Confort visuel
 11. **No unpleasant smells** / Confort olfactif
 12. **Sanitary quality of areas** / Qualité sanitaire des espaces
 13. **Sanitary air quality** / Qualité sanitaire de l'air

DGNB (D) **Potential direct or indirect contribution of textile flooring to the DGNB scheme “new office and administrative buildings 2012 (NBV12)”**
 Einflüsse textiler Bodenbelag im DGNB-System für das Nutzungsprofil Neubau Büro- und Verwaltungsgebäude 2012 (NBV12)

Environmental Quality / Ökologische Qualität (ENV)

ENV1.1 Life-cycle Assessment - Ecological footprint of the physical building components / Ökobilanz - Emissionsbedingte Umweltwirkungen
 ENV2.1 Life-cycle Assessment - Primary energy demand / Ökobilanz - Primärenergie

Sociocultural and Functional Quality / Soziokulturelle und funktionale Qualität (SOC) /

SOC 1.2 Indoor air quality / Innenraumluftqualität
 SOC 1.3 Acoustic comfort / Akustischer Komfort /
 SOC 1.7 Safety and security / Sicherheit und Störfallrisiken

Technical Quality / Technische Qualität (TEC)

TEC 1.2 Noise protection / Schallschutz
 TEC 1.5 Ease of Cleaning and Maintenance / Reinigungs- und Instandhaltungsfreundlichkeit des Baukörpers
 TEC 1.6 Ease of dismantling and recycling / Rückbau- und Demontagefreundlichkeit

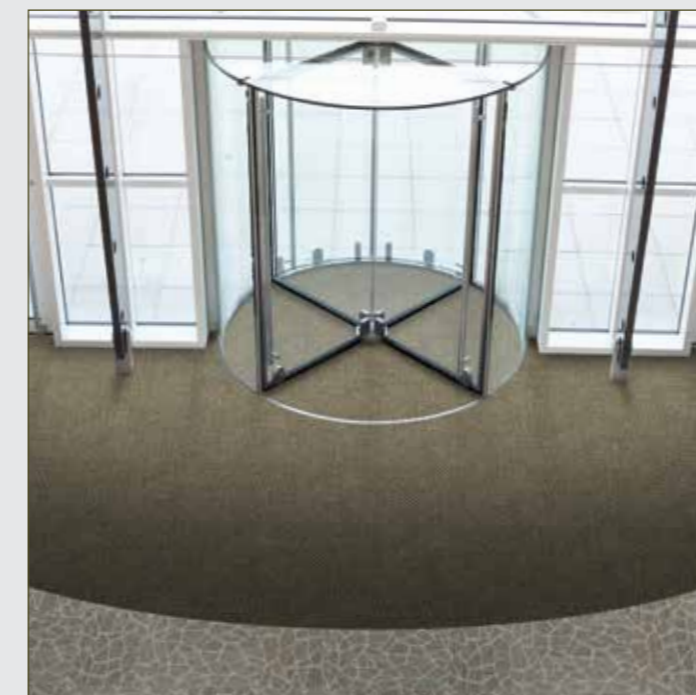
Process Quality / Prozessqualität (PRO)

PRO 1.3 Comprehensive project definition / Nachweis der Optimierung und Komplexität der Herangehensweise in der Planung
 PRO 1.5 Comprehensive building design / Schaffung von Voraussetzungen für eine optimale Nutzung und Bewirtschaftung



TacTiles™

- A smarter, more sustainable way to install carpet tiles
- No need for liquid adhesives
- Fitting tiles is quick, clean and easy and the process virtually eliminates emissions
- No damage to sub floors, and nothing to stop you lifting or moving the carpet whenever you want



Entrance Matting

Incredibly tough, hard-wearing and practical; indoor entrance matting acts as the first line of defence to any interior by removing almost 100% of dirt, rain and mud before it's walked into your flooring.

Both of the products in our commercial entrance matting range – Barricade and Foyer – are resilient, functional, easy to maintain and stylish. And it's for these reasons that our barrier matting forms an essential part of any maintenance programme needed to keep your floorcovering looking its very best.